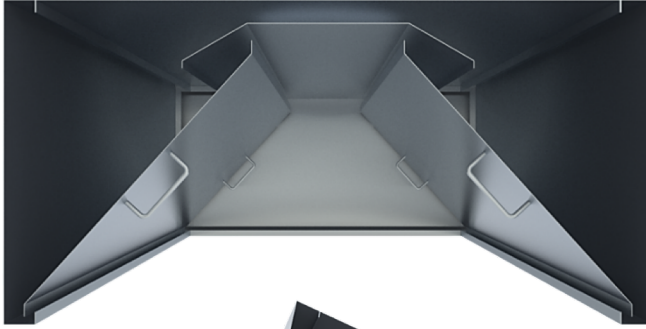


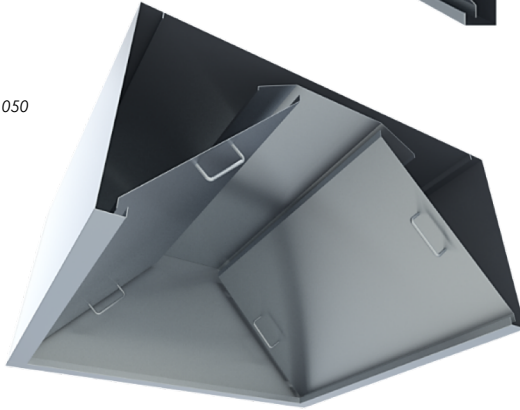
STAINLESS STEEL

CONDENSATE HOOD

STANDARD SERIES



SDB1001050



Model No: _____
Quantity: _____

FEATURES:

Condensate hoods are specially developed to condense and remove steam produced by kitchen dishwashers and Ovens. Their internal volume allows large volume of air removal:

- High efficiency exhausting.
- Angled internal baffles and deflectors.
- Stainless steel, welded design.

CONSTRUCTION:

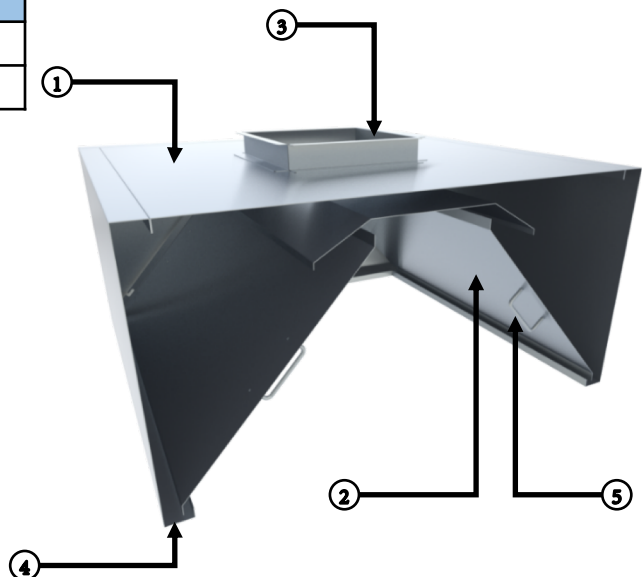
Exposed parts are manufactured from 1.0mm stainless steel thickness. Drain points at both ends to collect condensed water.

MATERIALS:

NO.	PARTS	MATERIAL DESCRIPTION
1	BODY CONSTRUCTION	S/S 304 1.0MM THICKNESS 20 Gauge
2	INTERIOR BAFFLES	S/S 304 1.0MM THICKNESS 20 Gauge
3	Duct Collar	S/S 304 1.0MM THICKNESS 20 Gauge
4	CONDENSATE CHANNEL	S/S 304 1.0MM THICKNESS 20 Gauge
5	FILTER HANDLES	S/S 8MM SOLID ROD
EQUIPMENT BUILT		
SURFACE		HAIRLINE FINISH (304)
ASSEMBLY/SHIPPING		ASSEMBLED

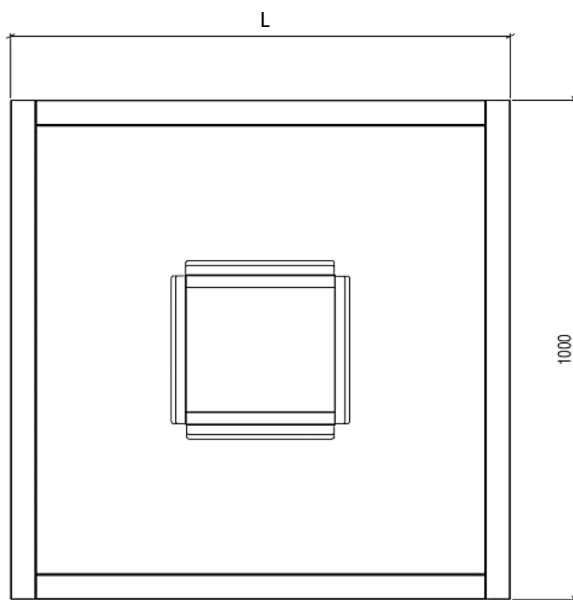
DIMENSIONS:

LENGTH	1000(SERIES)
1000	SDB1001050
1400	SDB1401050
1800	SDB1801050
2000	SDB2001050
2400	SDB2401050
2800	SDB2801050

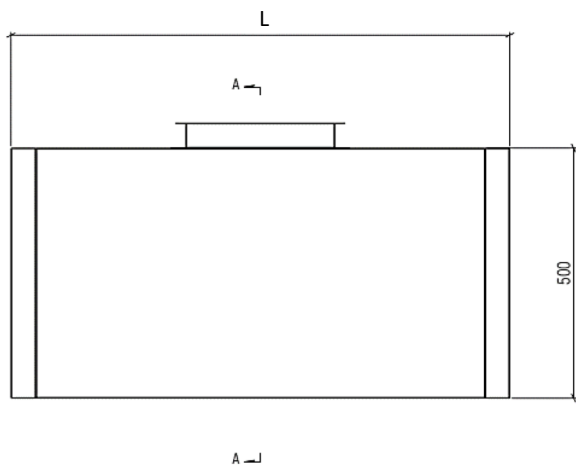


STAINLESS STEEL
EXHAUST HOOD
STANDARD SERIES

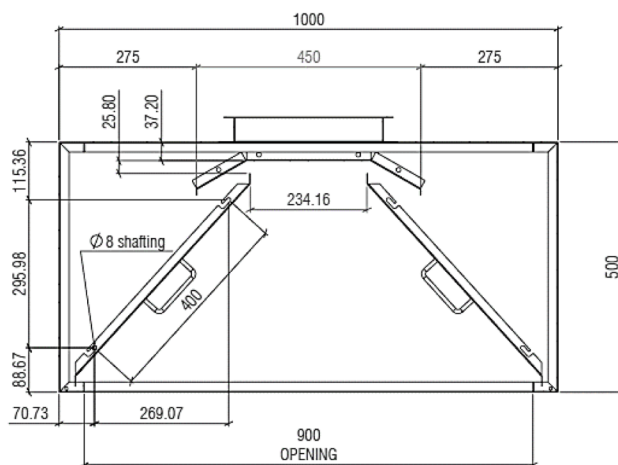
TYPICAL DIMENSIONS AND SPECIFICATIONS:



TOP VIEW



FRONT ELEVATION



SECTION A-A