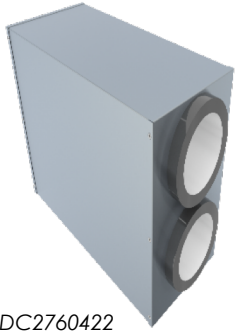


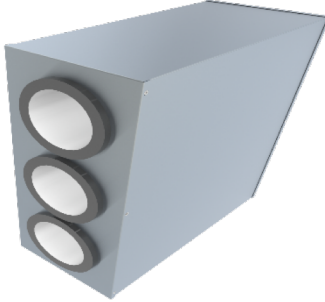
# Vertical Cabinet Cup Dispenser

## STANDARD SERIES

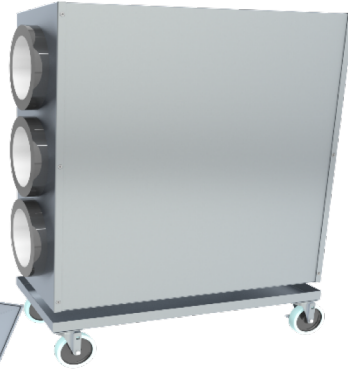
Model No: \_\_\_\_\_  
 Quantity: \_\_\_\_\_



CDC2760422



CDC2760653



CDS 2760753C

**FEATURES:**

Cup Dispenser is completely manufactured from stainless steel 304, 20 Gauge (1.0mm). and equipped with two or three Drop in Mounted horizontally. Accommodates cups with a rim diameter between 70 mm to 108 mm (23/4 in and 41/4in) from 8oz to 32oz. Allowed to maximize counter space with vertical cabinets and easy way to organize cups . AS Option caster wheel 3"

**CONSTRUCTION:**

Fully welded structure and polished for a monolithic appearance.

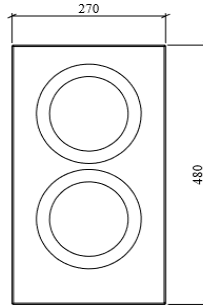
**MATERIAL:**

PARTS	S-LINE (STANDARD)
Front & back cover	S/S 304 1.0MM THICKNESS 20 Gauge
Body	S/S 304 1.0MM THICKNESS 20 Gauge
Caster Wheel	3"
Cup Dispenser Drop In	DAC-05
SCREW	M4 FLAT Head BOLT
EQUIPMENT BUILT	
SURFACE	HAIRLINE FINISH (304)
ASSEMBLY/SHIPPING	ASSEMBLY

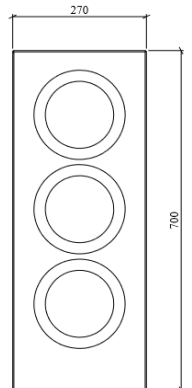
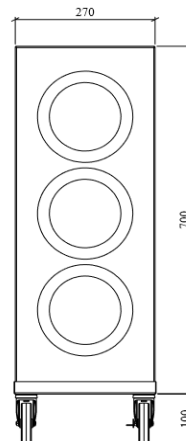
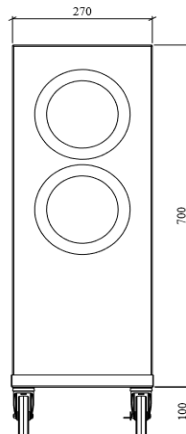
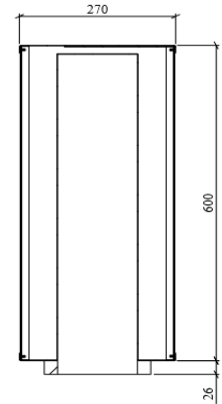
**DIMENSIONS:**

TYPE	LENGTH	WIDTH	HEIGHT
Vertical Cabinet Cup Dispenser WITH 2 CUP DISPANSER Drop In	270	600	480
Vertical Cabinet Cup Dispenser WITH 3 CUP DISPANSER			700
Vertical Cabinet Cup Dispenser WITH 2 CUP DISPANSER Drop In W/ Caster wheel			800
Vertical Cabinet Cup Dispenser WITH 3 CUP DISPANSER Drop In W/ Caster wheel			800

**DIMENSION AND SPECIFICATIONS:**



TOP COUNTER WITH 2 CUP DISPANSER



UNDERCOUNTER WITH 2 CUP DISPANSER

UNDERCOUNTER WITH 3 CUP DISPANSER

TOP COUNTER WITH 3 CUP DISPANSER

**CD 27 60**

