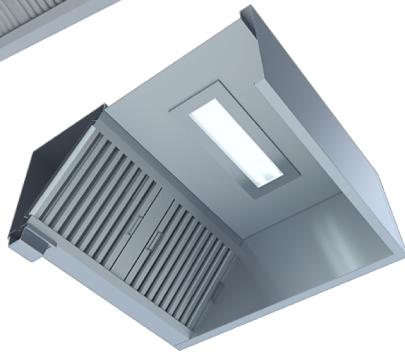




SDW41013050



SSW12012050

Model No: \_\_\_\_\_  
Quantity: \_\_\_\_\_

#### FEATURES:

Exhaust hoods are highly efficient kitchen ventilation that remove contaminated air and excess heat emitted by cooking equipment, helping to provide a comfortable and clean environment:

- High efficiency grease filtration.
- Efficient LED lights.
- Stainless steel, welded design.

#### CONSTRUCTION:

Exposed parts are manufactured from 0.8mm stainless steel thickness. Hood ends have double side wall construction. A concealed collection cup is fitted into the grease drain channel for easy removal.

**S** \_\_\_\_\_ **50 AR102**

TYPE:  
DW = DOUBLE SKIN WALL TYPE  
DI = DOUBLE SKIN ISLAND TYPE  
SW = SINGLE SKIN WALL TYPE  
SI = SINGLE SKIN ISLAND TYPE

LENGTH

FIRE SUPPRESSION SYSTEM  
(ADDITIONAL)

HEIGHT

WIDTH

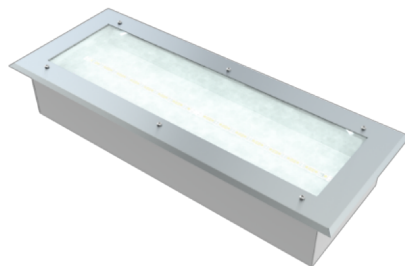


ISLAND TYPE WIDTH IS TWICE AS WALL TYPE WIDTH

#### ACCESSORIES:



Hood Drain



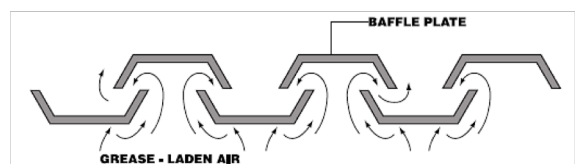
RECESSED LED LIGHTS  
WITH GLASS DIFFUSER



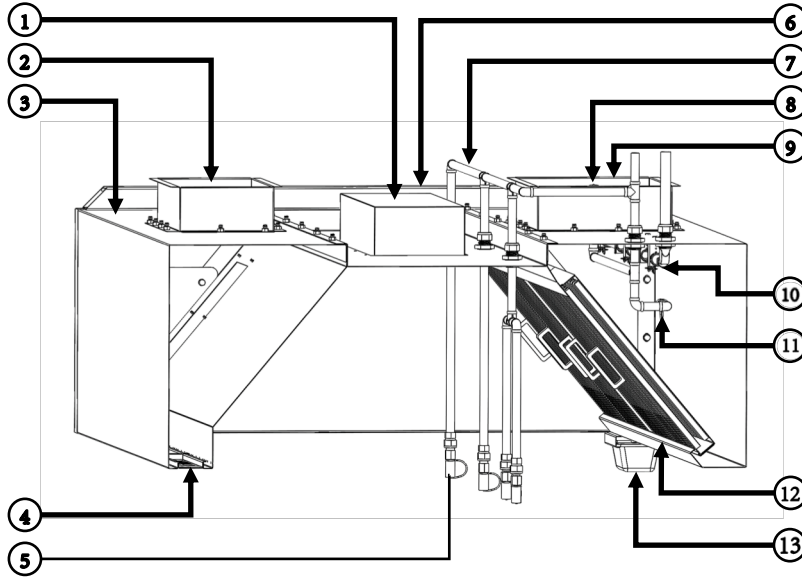
S/S GREASE PAN



BAFFLE FILTER



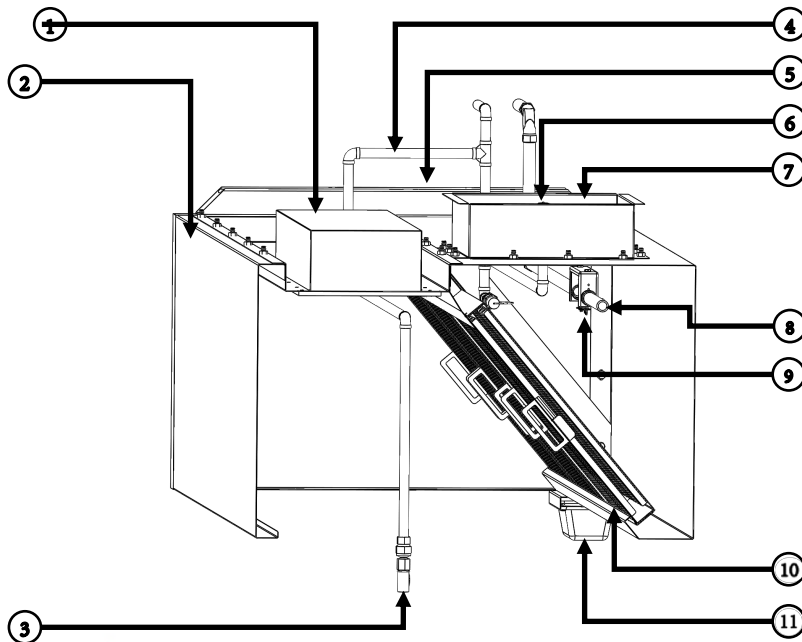
HOW BAFFLE FILTERS WORK



DOUBLE SKIN EXHAUST HOOD

**MATERIALS:**

PARTS		SHEET GAUGE
1	RECESSED LED LIGHT	
2	FRESH AIR DUCT	20 GAUGE SS AISI 304
3	BODY CONSTRUCTION	20 GAUGE SS AISI 304
4	FRESH AIR LOUVERS	20 GAUGE SS AISI 304
5	EQUIPMENT NOZZLE	
6	GI MOUNTING BAR	14 GAUGE, Galvanised
7	FIRE SUPPRESSION SYSTEM (ADDITIONAL)	
8	DUCT NOZZLE	
9	EXHAUST DUCT - NECK	20 GAUGE SS AISI 304
10	FUSIBLE LINK	
11	PLENUM NOZZLE	
12	BAFFLE FILTERS (DOUBLE PANEL)	20 GAUGE SS AISI 304
13A	REMOVABLE GREASE CAN	(F15-0019) COMPONENT HARDWARE
13B	HOOD DRAIN	F10 -1187 COMPONENT HARDWARE
EQUIPMENT BUILT		
FINISH		WELDED & SILICONE GASKET
SURFACE		HAIRLINE FINISH (304)
ASSEMBLY/SHIPPING		COMPLETE KNOCK DOWN SHIPPING ASSEMBLED

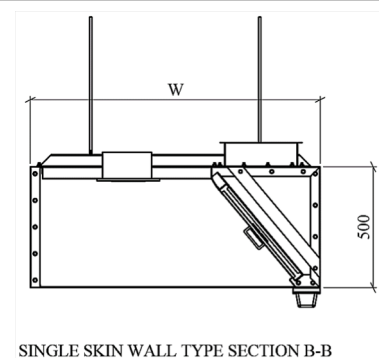
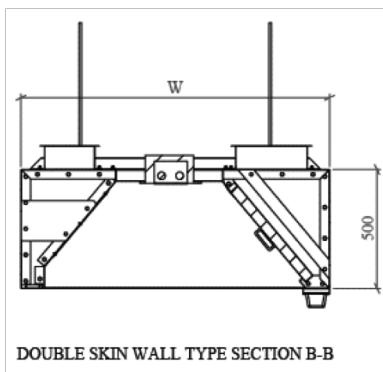
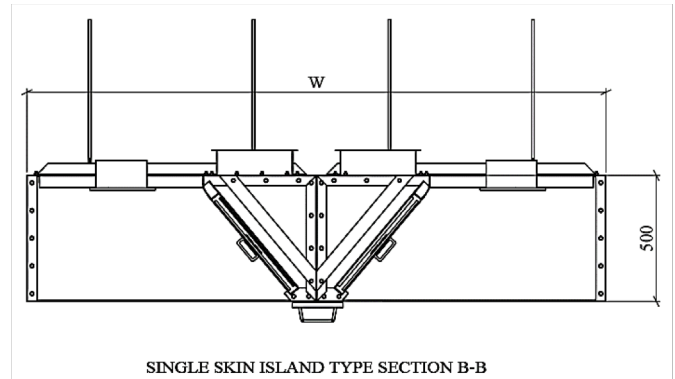
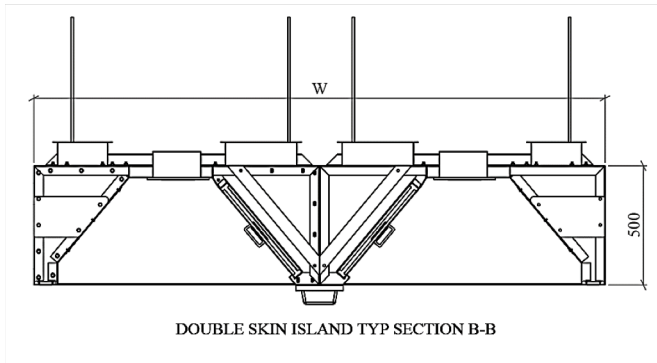
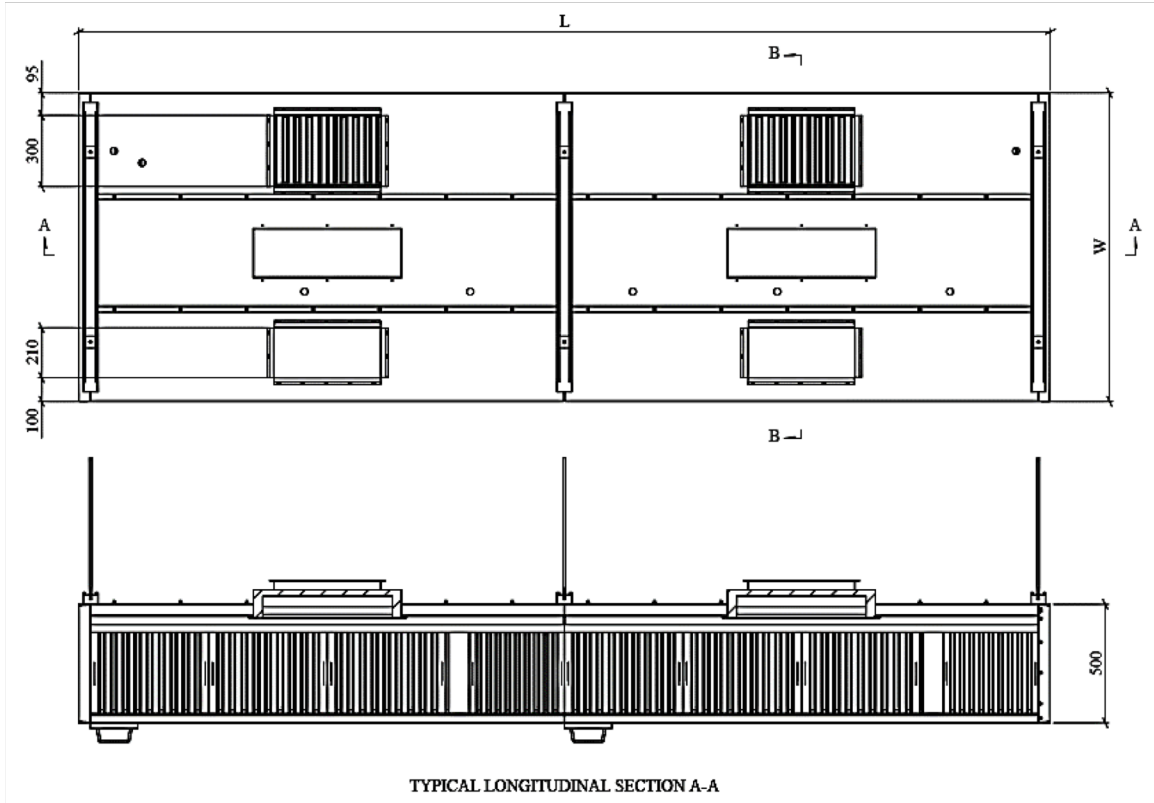


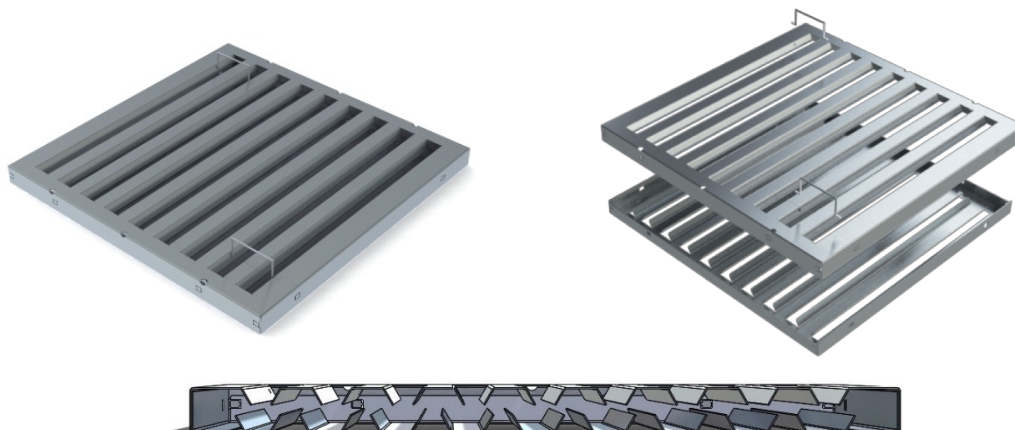
SINGLE SKIN EXHAUST HOOD

**MATERIALS:**

PARTS		GAUGE
1	RECESSED LED LIGHT	
2	BODY CONSTRUCTION	20 GAUGE SS AISI 304
3	EQUIPMENT NOZZLE (ADDITIONAL)	
4	FIRE SUPPRESSION SYSTEM (ADDITIONAL)	
5	GI MOUNTING BAR	14 GAUGE, Galvanised
6	DUCT NOZZLE (ADDITIONAL)	
7	EXHAUST DUCT- NECK	20 GAUGE SS AISI 304
8	PLENUM NOZZLE (ADDITIONAL)	
9	FUSIBLE LINK (ADDITIONAL)	
10	BAFFLE FILTERS - DOUBLE PANEL	20 GAUGE SS AISI 304
11	REMOVABLE GREASE CAN	(F15-0019) COMPONENT HARDWARE
EQUIPMENT BUILT		
FINISH		WELDED & SILICONE GASKET
SURFACE		HAIRLINE FINISH (304)
ASSEMBLY/SHIPPING		COMPLETE KNOCK DOWN SHIPPING ASSEMBLED

**TYPICAL DIMENSIONS AND SPECIFICATIONS:**





#### MATERIALS:

PARTS	MATERIAL
FRONT COVER	S/S 304 1.0MM THICKNESS
BACK COVER	S/S 304 1.0MM THICKNESS
HANDLES	S/S 3.0MM SOLID ROD

#### FEATURES:

Stainless steel filters are the most durable, easiest to clean and the best choice for high volume operations. They offer a bright shiny finish. Baffle type makes the grease drain off the filter quickly.

All filters are:

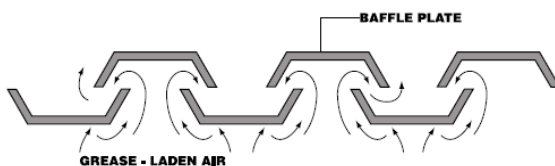
- Heat, flame and grease proof
- All filters come complete with handles
- Easily cleaned in dishwasher or by soaking or spraying

#### SIZES:

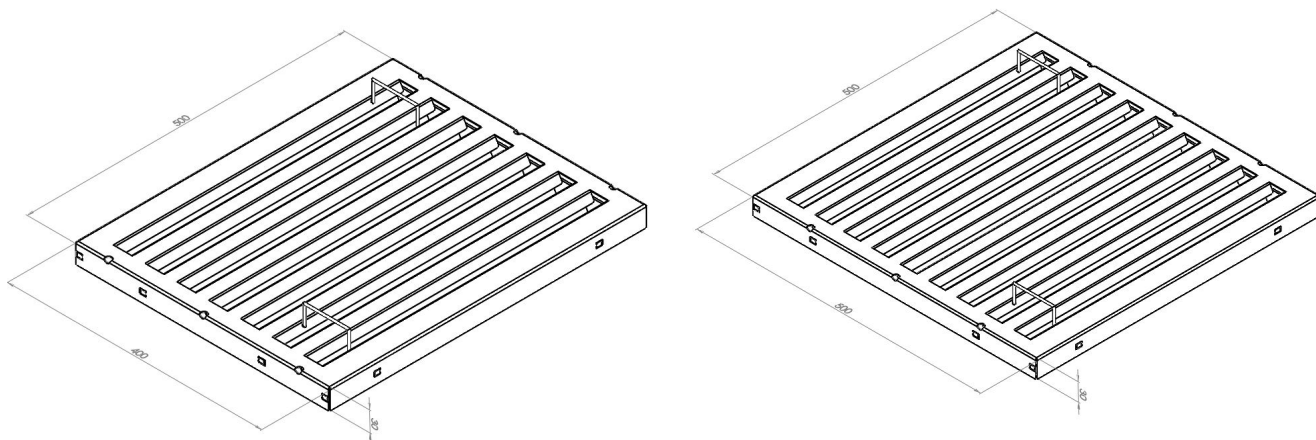
CODE	DIMENSIONS
BF505030	500MM X 500MM X 30MM
BF405030	400MM X 500MM X 30MM

The baffle grease filter accomplishes both needs through its clever design of interlocking baffles that provide a tortuous route for the passage of air through the filter by creating two rapid 180° air direction changes simultaneously. The grease molecules having a far greater inertial force than air, impact themselves on the vanes.

Miran stainless steel filters are NSF approved



#### HOW BAFFLE FILTER WORKS



**BF405030**

**BF505030**