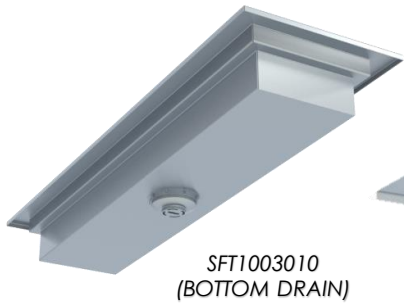
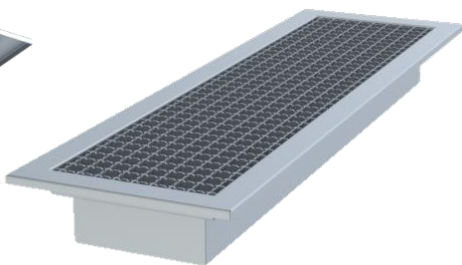


STAINLESS STEEL
FLOOR TROUGHS W/ GRATINGS
 STANDARD SERIES

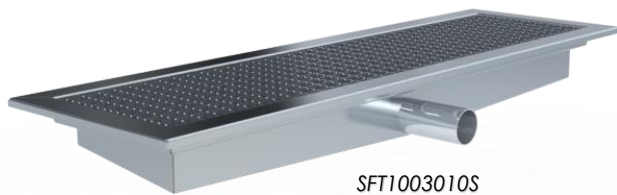
Model No: _____
 Quantity: _____



SFT1003010
 (BOTTOM DRAIN)



SFT1003010S
 (SIDE DRAIN)



FEATURES:

Corrugated gratings to prevent caster from getting trapped and anti slip to avoid hazards.

Floor troughs will have a 3 3/4" opening and accommodate 2" pipe with a removable stainless steel flat strainer drain. Side drain will accommodate 2" pipe.

CONSTRUCTION:

Fully welded corners ground and polished for a monolithic appearance. Gratings are all TIG welded.

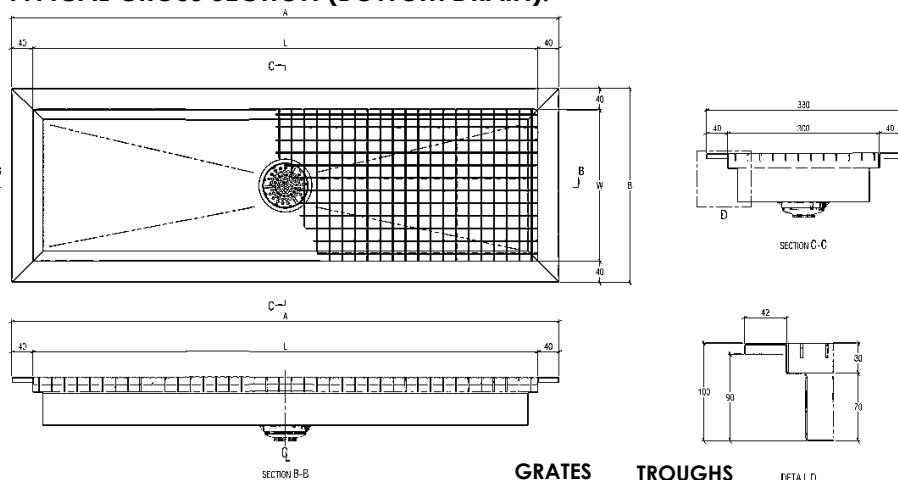
MATERIALS:

PARTS	S-LINE (STANDARD)
SHELVES	S/S 304 1.5mm THICKNESS
GRATINGS	S/S 304 2.0mm THICKNESS
STRAINER BASKET	ENCORE – E32-4900
EQUIPMENT BUILT	
FINISH	WELDED
SURFACE	HAIRLINE FINISH (304)
ASSEMBLY/SHIPPING	KCD (Knockdown)

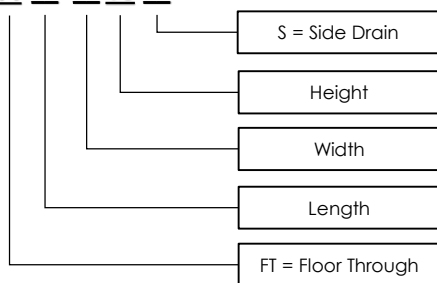
DIMENSIONS:

LENGTH	300(SERIES) BOTTOM DRAIN	300(SERIES) SIDE DRAIN	DELIVERY (APPROX.)	A	B
600	SFT603010	SFT603010S	11 kg	480mm	380mm
900	SFT903010	SFT903010S	12.5 kg	980mm	380mm
1200	SFT1203010	SFT1203010S	14.3 kg	1280mm	380mm
1500	SFT1503010	SFT1503010S	15.6 kg	1580mm	380mm
1800	SFT1803010	SFT1803010S	17.1 kg	1880mm	380mm

TYPICAL CROSS SECTION (BOTTOM DRAIN):



SFT 10



FOR FLOOR TROUGHS MORE THAN 1500
 THERE WILL BE TWO FLOOR DRAINS

TYPICAL CROSS SECTION (SIDE DRAIN):

