

# MOP SINK CABINET

## STANDARD SERIES



SBMP126021D



SBMP606021

Model No: \_\_\_\_\_  
Quantity: \_\_\_\_\_

### FEATURES:

Mop Sink Cabinets are built with Heavy gauge 304 stainless steel construction. Includes mop sink that built with Heavy Gauge 16 (1.5mm) stainless steel, fully welded joints with radii on all corners and polished for a smooth finish.

### CONSTRUCTION:

Cabinets and sink bowls are Tig welded, polished joints for a monolithic appearance.

### MATERIALS:

PARTS	S-LINE (STANDARD)
TOP	S/S 304 1.5MM THICKNESS 16 Gauge
BODY CONSTRUCTION	S/S 304 1.0 MM THICKNESS 20 Gauge
REMOVABLE SHELF	S/S 304 1.0 MM THICKNESS 20 Gauge
SINK BOWL	S/S 304 1.5MM THICKNESS 16 Gauge
WALL MOUNTED FAUCET	KL54-8008-SE4
P-TRAP & TAIL P ILE	SINK P TRAP 1 1-2" METAL
SINK STRAINER	SINK STRAINER LD-830
<b>EQUIPMENT BUILT</b>	
SURFACE	HAIRLINE FINISH (304)
ASSEMBLY/SHIPPING	ASSEMBLE/ Faucet Not Assembled

### DIMENSIONS:

MODELS	LENGTH	WIDTH	HEIGHT	CODE
SINGLE DOOR	600	600	2100	SBMP606021
DOUBLE DOOR	1200	600		SBMP126021D

### SINK BOWL SIZES:

One Size: 400 x 400 x 200

### ACCESSORIES AND OPTIONS (+):



WALL MOUNTED FAUCET



LIFT-OFF HIGNES



RECESSED PULL HANDLE



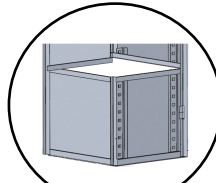
MAGNETIC DOOR CATCHES



P-TRAP & TAIL PILE



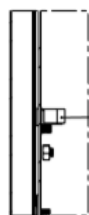
SINK STRAINER



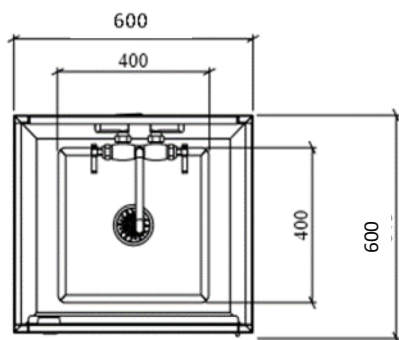
ADJ SHELF

STAINLESS STEEL  
**MOP SINK CABINET**  
STANDARD SERIES

**DIMENSION AND SPECIFICATIONS**

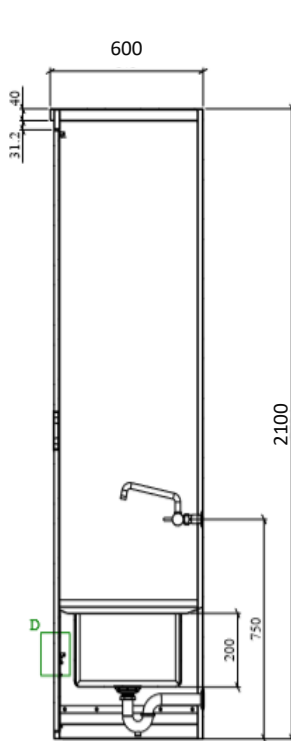


DETAIL D  
SCALE 1:3

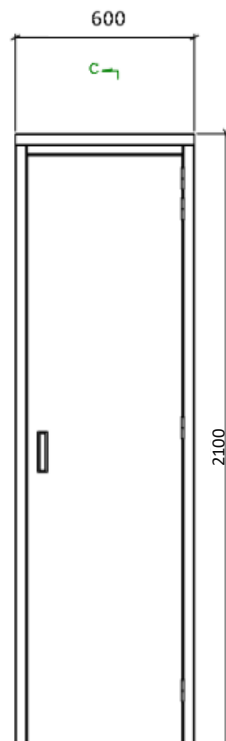


**SINK BOWL SIZES:**

One Size: 400 x 400 x 200

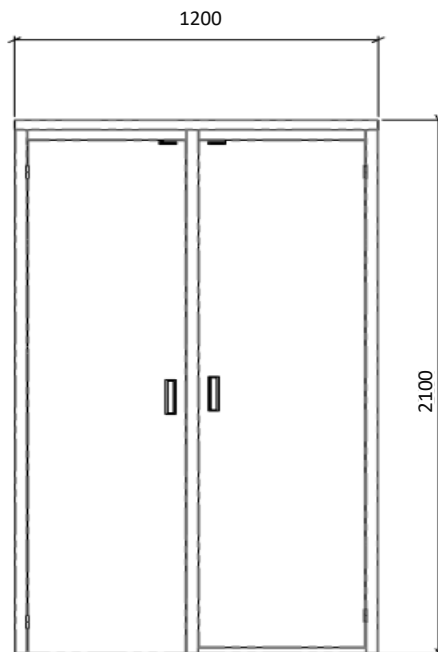
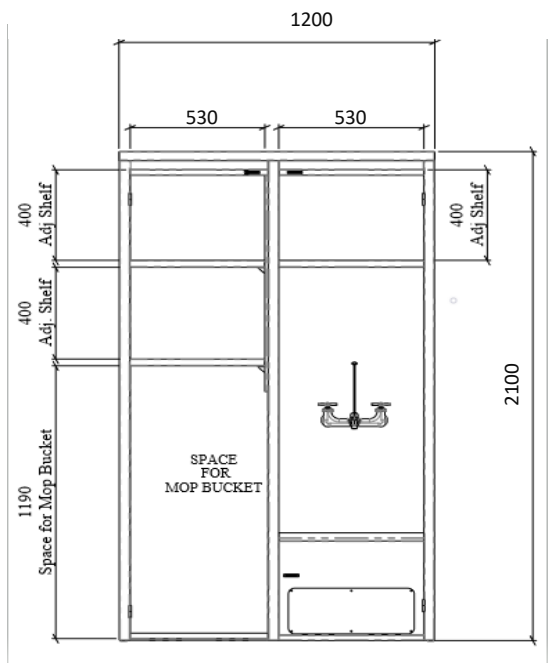


SECTION C-C



C-C

**Mop Sink Cabinet – Single Door**



**Mop Sink Cabinet – Double Door**