

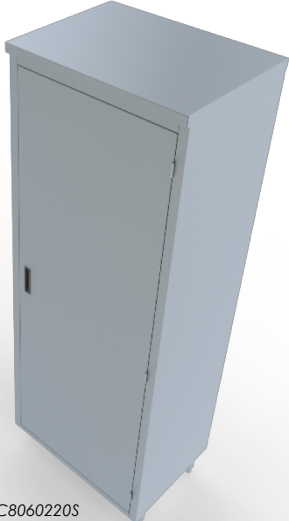
Upright Cabinet

STANDARD SERIES

Model No: _____
 Quantity: _____



SUC12060220D



SUC8060220S

FEATURES:
 Up-Right Cabinet are built with Heavy gauge 304 stainless steel construction. Includes Adjustable shelves that built with Gauge 18 (1.2 mm) stainless steel.

CONSTRUCTION:
 Cabinets and sink bowls are Tig welded, polished joints for a monolithic appearance.

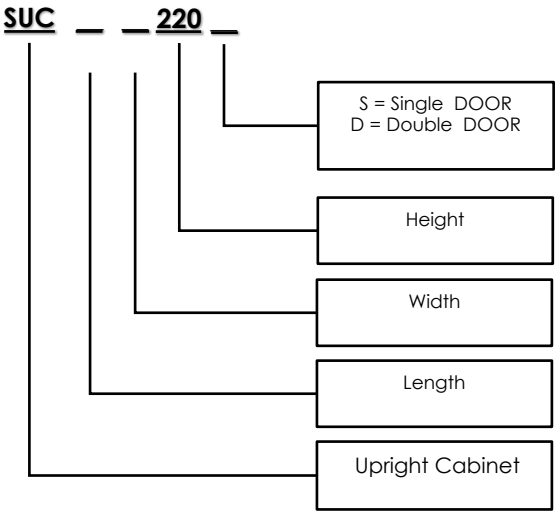
MATERIALS:

PARTS	S-LINE (STANDARD)
TOP	S/S 304 1.5MM THICKNESS
BODY CONSTRUCTION	S/S 304 1.0 MM THICKNESS
ADJ SHELF	S/S 304 1.0 MM THICKNESS
LEGS(ROUND)	42mmØ S/S TUBES
EQUIPMENT BUILT	
SURFACE	HAIRLINE FINISH (304)
ASSEMBLY/SHIPPING	ASSEMBLE

DIMENSIONS:

MODELS	LENGTH	400(SERIES)	600(SERIES)
SINGLE DOOR	800	SUC8040220S	SUC8060220S
DOUBLE DOOR	1000	SUC10040220D	SUC10060220D
	1200	SUC12040220D	SUC12060220D
	1400	SUC14040220D	SUC14060220D

ACCESSORIES AND OPTIONS(✦):



LIFT-OFF HIGNES



MAGNETIC DOOR CATCHES



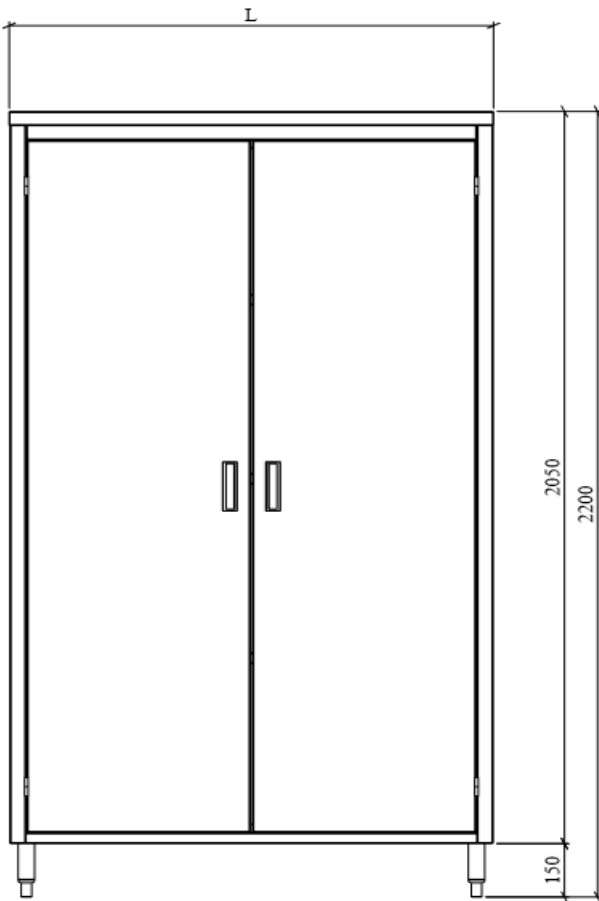
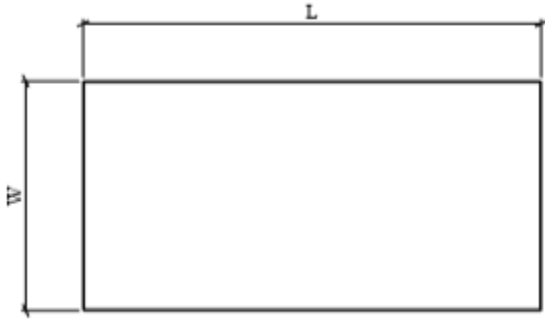
RECESSED PULL HANDLE



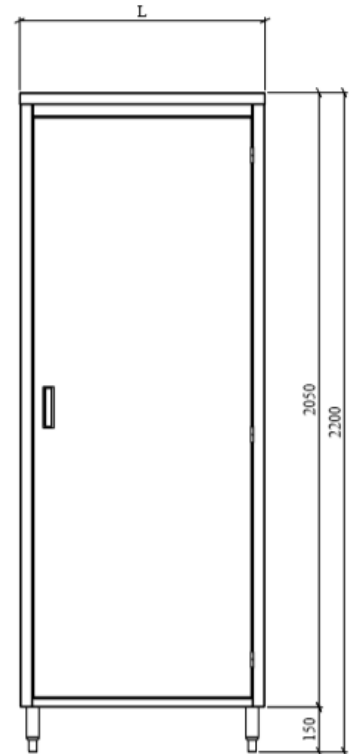
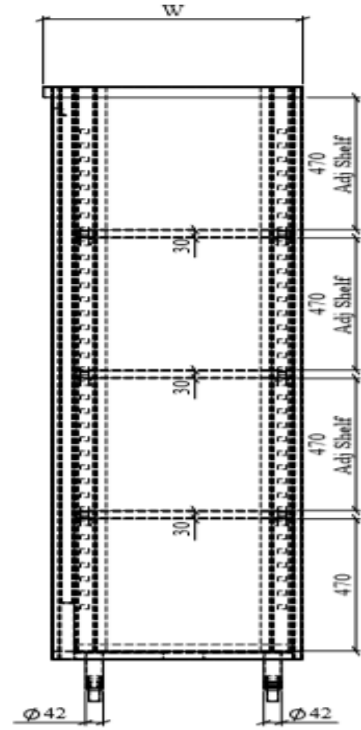
Adj SHELF



DIMENSION AND SPECIFICATIONS



Up-Right Cabinet – Double Door



Up-Right Cabinet – Single Door